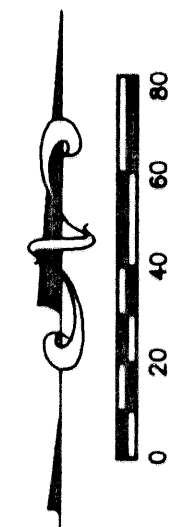


STATE OF FLORIDA
 COUNTY OF PALM BEACH

THIS PLAT WAS FILED FOR
 RECORD _____
 THIS _____ DAY OF _____
 AD, 2002 AND DULY RECORDED
 IN PLAT BOOK _____ ON PAGES
 _____ AND _____

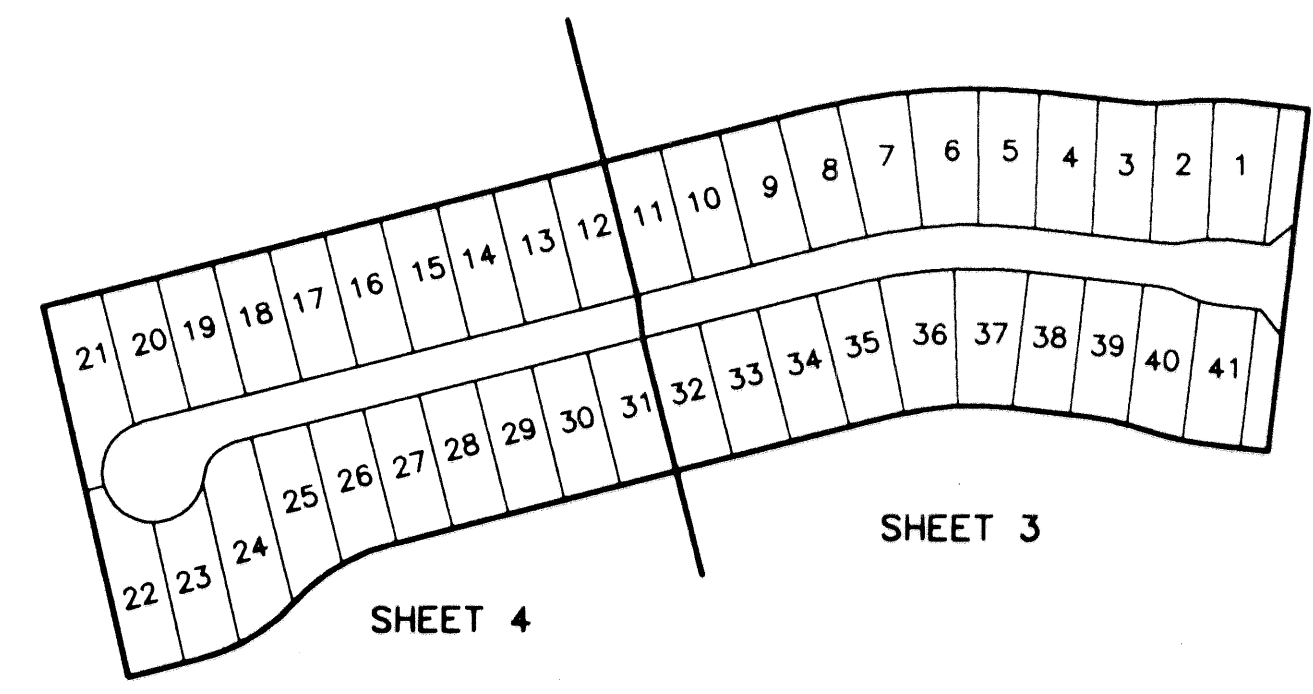
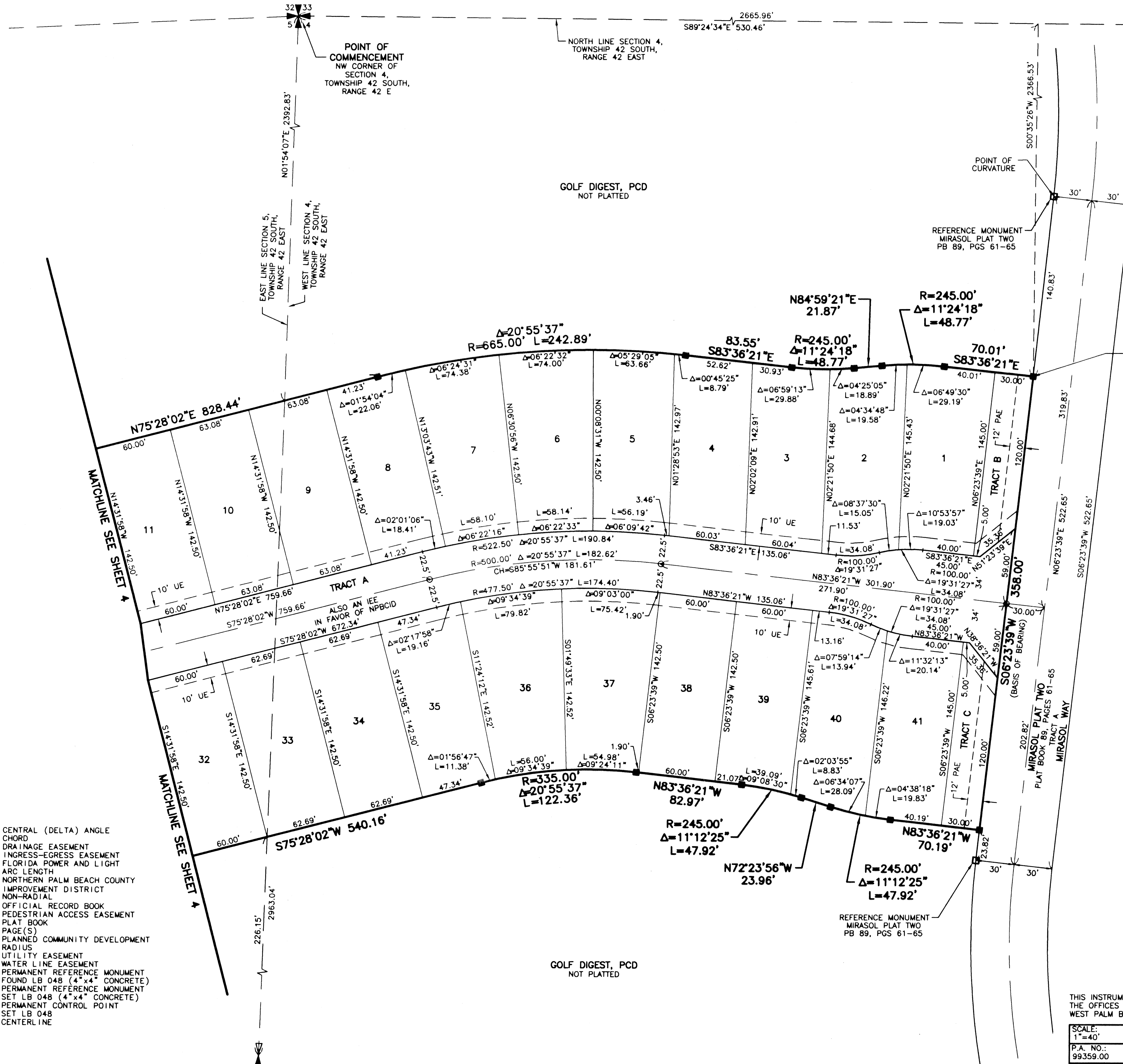
DOROTHY H. WILKEN, CLERK
 BY: _____, D.C.

CIRCUIT COURT SEAL



MIRASOL PARCEL SIX

PART OF GOLF DIGEST P.C.D.
 SECTIONS 4 AND 5, TOWNSHIP 42 SOUTH, RANGE 42 EAST,
 CITY OF PALM BEACH GARDENS,
 PALM BEACH COUNTY, FLORIDA
 SHEET 3 OF 4



- LEGEND**
- Δ CENTRAL (DELTA) ANGLE
 - CH CHORD
 - DE DRAINAGE EASEMENT
 - IEE INGRESS-EGRESS EASEMENT
 - FPL FLORIDA POWER AND LIGHT
 - L ARC LENGTH
 - NPBCID NORTHERN PALM BEACH COUNTY IMPROVEMENT DISTRICT NON-RADIAL
 - (NR) OFFICIAL RECORD BOOK
 - ORB OFFICIAL RECORD BOOK
 - PAE PEDESTRIAN ACCESS EASEMENT
 - PB PLAT BOOK
 - PG(S) PLANNED COMMUNITY DEVELOPMENT
 - PCD RADIUS
 - R RADIUS
 - UE UTILITY EASEMENT
 - WLE WATER LINE EASEMENT
 - PERMANENT REFERENCE MONUMENT FOUND LB 048 (4" x 4" CONCRETE)
 - PERMANENT REFERENCE MONUMENT SET LB 048 (4" x 4" CONCRETE)
 - PERMANENT CONTROL POINT
 - SET LB 048
 - ⊕ CENTERLINE

S:\New\top\pa06\img\pa06rp02.dwg 03/26/02 10:34:02 AM EST

REV.: 02-05-02
 CAD FILE:
 TAYLPA06\PA06RP02

THIS INSTRUMENT WAS PREPARED BY MARY HANNA CLODFELTER, P.S.M. IN THE OFFICES OF MOCK, ROOS & ASSOCIATES, INC., 5720 CORPORATE WAY, WEST PALM BEACH, FLORIDA 33407.

SCALE: 1"=40'	FLORIDA L.B. NO. 48
P.A. NO.: 99359.00	MOCK • ROOS ENGINEERS • SURVEYORS • PLANNERS
DATE: SEPTEMBER, 2001	
DRAWING NO. 42-42-04-97	5720 Corporate Way, West Palm Beach, Florida 33407 (561) 683-3113, fax 478-7248

MIRASOL PARCEL SIX
 PART OF GOLF DIGEST P.C.D.
 SITUATE IN SECTIONS 4 AND 5,
 TOWNSHIP 42 SOUTH, RANGE 42 EAST,
 CITY OF PALM BEACH GARDENS,
 PALM BEACH COUNTY, FLORIDA